

Colorado's No Wrong Door Efforts: Solving the Puzzle of LTSS

Aron Snyder

June 22, 2017



COLORADO

Department of Health Care
Policy & Financing

Our Mission

Improving health care access and outcomes for the **people** we serve while demonstrating sound stewardship of financial **resources**



COLORADO

Department of Health Care
Policy & Financing



COLORADO

No Wrong Door

Department of Health Care Policy & Financing
Department of Human Services
Department of Labor and Employment

What is No Wrong Door?

No Wrong Door (NWD) is a seamless entry point system for all individuals accessing long-term services and supports (LTSS), regardless of age, disability or pay source.



COLORADO

Department of Health Care
Policy & Financing



COLORADO

No Wrong Door

Department of Health Care Policy & Financing
Department of Human Services
Department of Labor and Employment

Background



COLORADO

Department of Health Care
Policy & Financing



COLO R A D O

No Wrong Door

Department of Health Care Policy & Financing

Department of Human Services

Department of Labor and Employment

Recent Recommendations

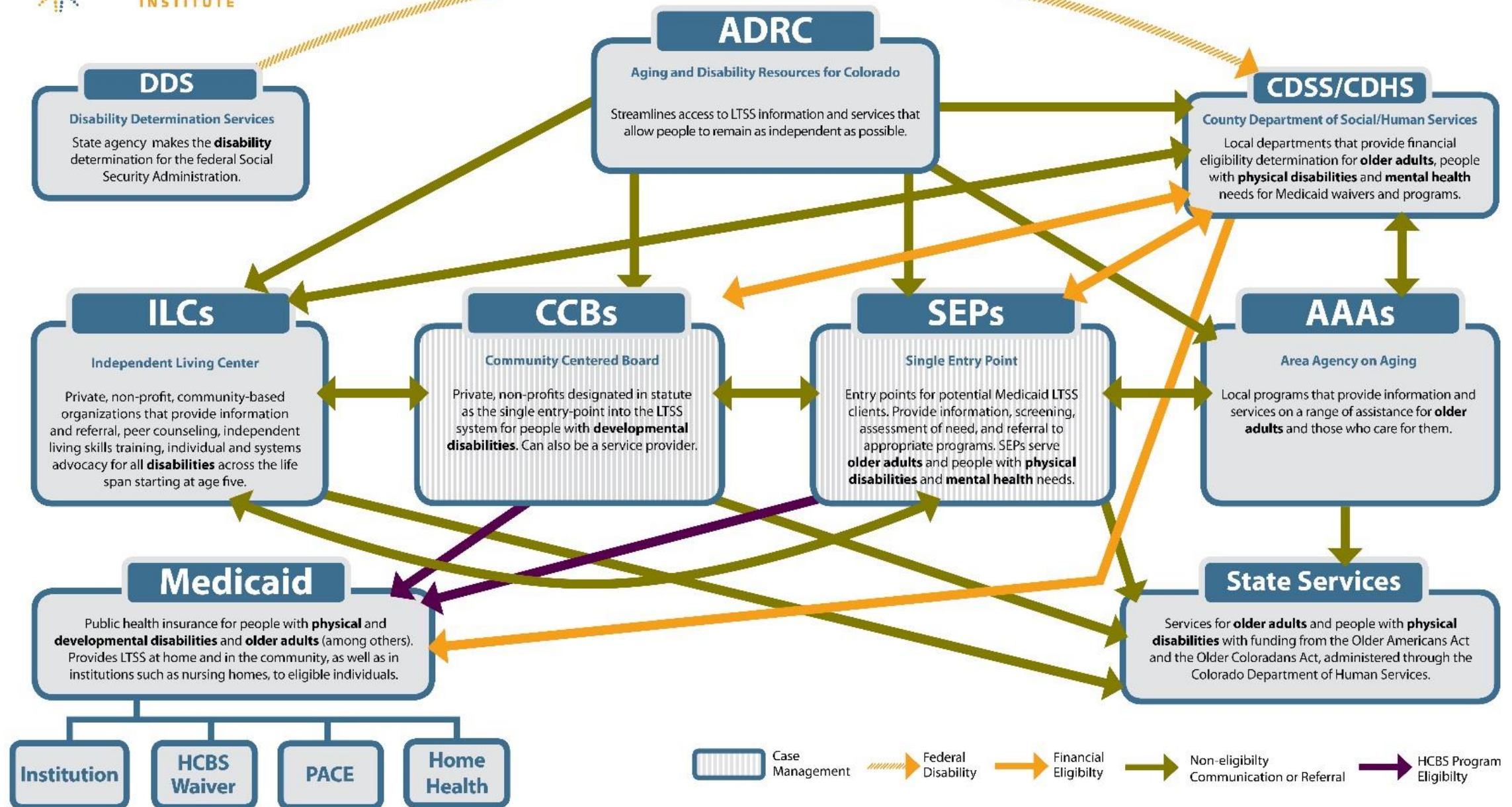
- **Community Living Advisory Group (CLAG)**
 - Create comprehensive access points for all LTSS
- **Colorado's Community Living Plan (CCLP)**
 - Improve communication among LTSS entry point organizations to provide accurate, timely and consistent information about service options in Colorado
 - Transition from long-term care facilities and hospitals
 - Diversion from long-term care facilities



COLO R A D O

Department of Health Care
Policy & Financing

LTSS Puzzle: The Status Quo



SOURCE: Analysis by Tasia Sinn, Senior Analyst, Colorado Health Institute



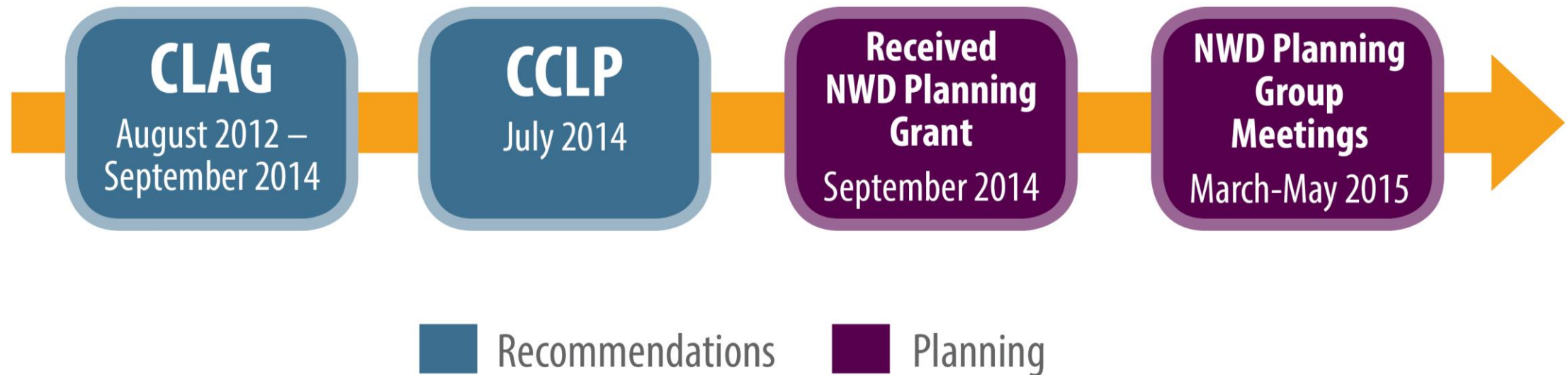


COLORADO

No Wrong Door

Department of Health Care Policy & Financing
Department of Human Services
Department of Labor and Employment

Planning Timeline



Feedback from NWD Focus Groups

- Lost, alone, not in control
- Retelling the same story
- Long process, delays
- Overloaded with paperwork
- Transitions are difficult



- Lack of information about what is available at other agencies
- Regulatory restrictions
- Powerlessness
- Unmanageable workload
- Emotional toll





COLORADO

No Wrong Door

Department of Health Care Policy & Financing
Department of Human Services
Department of Labor and Employment

Colorado's Three-Year NWD Implementation Plan



COLORADO

Department of Health Care
Policy & Financing



COLORADO

No Wrong Door

Department of Health Care Policy & Financing
Department of Human Services
Department of Labor and Employment

NWD Mission

Colorado's NWD system, through collaborative partnerships, increased communication and shared technology, ensures that all Coloradans with disabilities and older adults are connected to the supports and services they need to live dignified and self-determined lives in the community of their choice, regardless of pay source.



COLORADO

Department of Health Care
Policy & Financing



COLORADO

No Wrong Door

Department of Health Care Policy & Financing
Department of Human Services
Department of Labor and Employment

NWD Vision

Coloradans with disabilities and older adults can easily obtain comprehensive information and streamlined access to personalized supports and services that promote dignity, respect and freedom of choice from wherever they enter the system and for as long as they need services through the system.



COLORADO

Department of Health Care
Policy & Financing



COLORADO

No Wrong Door

Department of Health Care Policy & Financing
Department of Human Services
Department of Labor and Employment

Six Criteria of Colorado's NWD System

**Information,
Referral and
Community
Awareness**

**Person-Centered
Counseling**

**Streamlined
Eligibility
Determination for
Public Programs**

**Person-Centered
Transition Support**

**Consumer Populations,
Partnerships
and Stakeholder
Involvement**

**Quality Assurance and
Continuous Improvement**



COLORADO

Department of Health Care
Policy & Financing

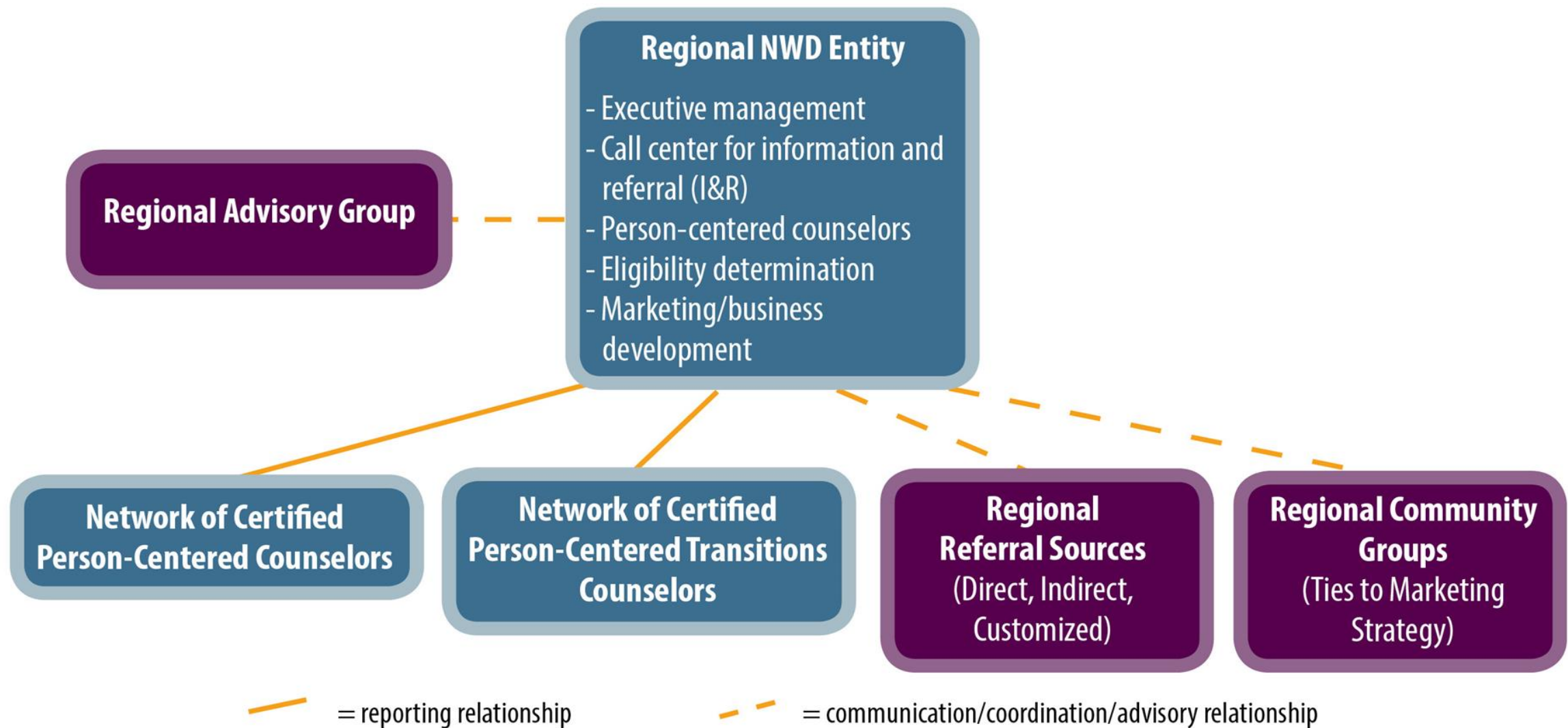


COLORADO

No Wrong Door

Department of Health Care Policy & Financing
Department of Human Services
Department of Labor and Employment

NWD on the Ground

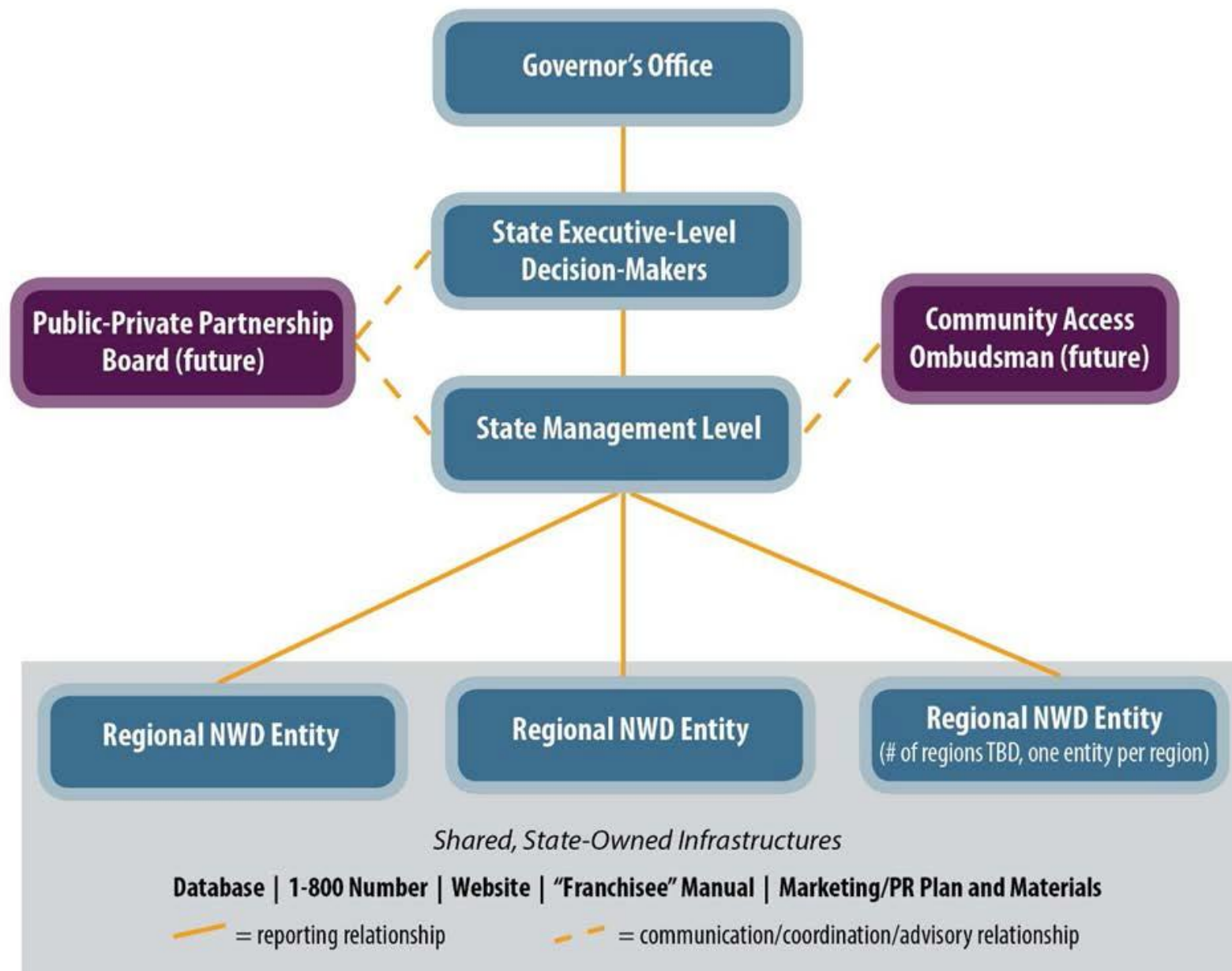




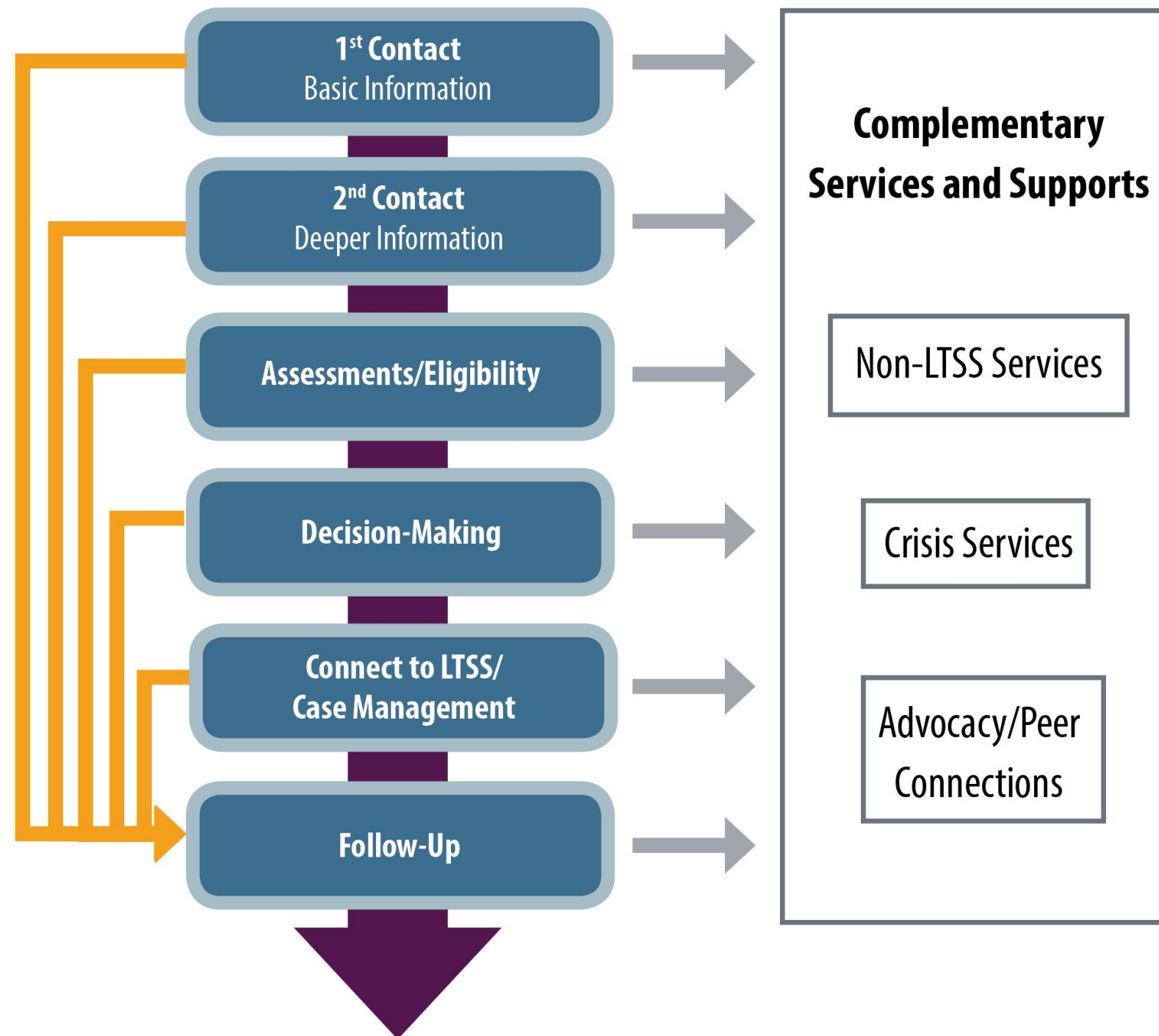
COLORADO No Wrong Door

Department of Health Care Policy & Financing
Department of Human Services
Department of Labor and Employment

State Level Oversight



Person-Centered Counseling Process





COLORADO

No Wrong Door

Department of Health Care Policy & Financing

Department of Human Services

Department of Labor and Employment

NWD Pilot Program

- Four Colorado communities selected as pilot sites
- Pilot sites will be used to:
 - Test the Regional NWD model
 - Implement NWD-specific person-centered counseling
 - Identify best practices



COLORADO

Department of Health Care
Policy & Financing



CO L O R A D O

No Wrong Door

Department of Health Care Policy & Financing
Department of Human Services
Department of Labor and Employment

Metro Pilot Site

- **Serving:**
 - Adams, Arapahoe, Denver and Douglas Counties
- **Lead Agency**
 - Colorado Access
- **Project Lead**
 - Penny Cook, Executive Director
- **Participating CCBs**
 - Developmental Pathways
 - Rocky Mountain Human Services



CO L O R A D O

Department of Health Care
Policy & Financing



COLORADO

No Wrong Door

Department of Health Care Policy & Financing
Department of Human Services
Department of Labor and Employment

Larimer County Pilot Site

- Lead Agency
 - Larimer County DHS
- Project Lead
 - Kelly Morrison, Deputy Division Manager, DHS Benefits Planning Division
- Participating CCB
 - Foothills Gateway, Inc.



COLORADO

Department of Health Care
Policy & Financing



COLORADO

No Wrong Door

Department of Health Care Policy & Financing
Department of Human Services
Department of Labor and Employment

Pueblo County Pilot Site

- Lead Agency
 - Senior Resource Development Agency (ADRC)
- Primary Contact
 - Tara Morrow, ADRC/211 Supervisor
- Participating CCB
 - Colorado Bluesky Enterprises, Inc.



COLORADO

Department of Health Care
Policy & Financing



CO L O R A D O

No Wrong Door

Department of Health Care Policy & Financing
Department of Human Services
Department of Labor and Employment

San Juan Basin Pilot Site

- Serving:
 - Archuleta, Dolores, La Plata, Montezuma and San Juan Counties
- Lead Agency
 - San Juan Basin Area Agency on Aging
- Primary Contact
 - Christina Knoell, SBJ AAA Director
- Participating CCB
 - Community Connections



CO L O R A D O

Department of Health Care
Policy & Financing



COLORADO

No Wrong Door

Department of Health Care Policy & Financing
Department of Human Services
Department of Labor and Employment

Next Steps

- Currently working to execute contracts with pilot sites
- Launching late summer or early fall



COLORADO

Department of Health Care
Policy & Financing



COLORADO

No Wrong Door

Department of Health Care Policy & Financing
Department of Human Services
Department of Labor and Employment

Questions



COLORADO
Department of Health Care
Policy & Financing



COLORADO

No Wrong Door

Department of Health Care Policy & Financing
Department of Human Services
Department of Labor and Employment

Contact Information

Aron Snyder

No Wrong Door Implementation Project Manager

Aron.snyder@state.co.us

<https://www.colorado.gov/hcpf/no-wrong-door-implementation-grant>



COLORADO
Department of Health Care
Policy & Financing



COLORADO

No Wrong Door

Department of Health Care Policy & Financing
Department of Human Services
Department of Labor and Employment

Thank You!



COLORADO
Department of Health Care
Policy & Financing