

*Breaking down  
the barriers to  
accessing mental  
health treatment  
for persons with  
IDD and/or ASD*

PATRICIA OLIVER, ED.D., BCBA-D

DAVID B. HATFIELD, PH.D.,  
LICENSED PSYCHOLOGIST AND  
BCBA-D

***OLIVER BEHAVIORAL  
CONSULTANTS***

*SPEECH, OT, ABA, AND MH  
EVALUATIONS AND TREATMENT*

Equity, inclusion, and access....these are not words to describe our current situation when our consumers seek mental health services in Colorado. Very few mental health providers feel comfortable or competent to provide these services. No official training programs or requirements exist to promote understanding and competency among our providers. Primary care providers, family members, support persons, and consumers face the undeniable truth--despite higher rates of mental health challenges among the citizenry with IDD and/or ASD, they often have no one to turn to. And even when they can identify a provider competent in this area, funding restrictions and a fractured service delivery system limit the accessibility and utility of those services. We will go over these and other barriers, then share options and models for eliminating them.

# Objectives of this presentation

AT THE END OF THIS DISCUSSION, YOU  
WILL BE BETTER ABLE TO IDENTIFY.....


*Elements of Diversity, Equity, Accessibility, and  
Inclusion*

*Common Barriers to MH access among persons  
with IDD and/or ASD*

*Remedies to these barriers*

# Why is this important?

---



We hold these truths to be self-evident: that all men are created equal; that they are endowed by their Creator with certain unalienable rights; that among these are life, liberty, and the pursuit of happiness.

(Thomas Jefferson)

ixquotes.com

LACK OF DIVERSITY, EQUITY, ACCESSIBILITY, AND INCLUSIVITY

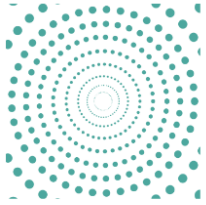
HIGHER RATES OF MH ISSUES AND TRAUMA

SYSTEMIC INSTITUTIONALIZED AND ACCEPTED BIAS

EFFECTIVE TREATMENT EXISTS

WE ALL DESERVE THE RIGHT TO PURSUE HAPPINESS!

## Diversity



**Diversity** is all the ways that people are different and the same at the individual and group levels. Even when people appear the same, they are different. Organizational diversity requires examining and questioning the makeup of a group to ensure that multiple perspectives are represented.

## Equity



**Equity** is the fair and just treatment of all members of a community. Equity requires commitment to strategic priorities, resources, respect, and civility, as well as ongoing action and assessment of progress toward achieving specified goals.<sup>1</sup>

## Inclusion



**Inclusion** refers to the intentional, ongoing effort to ensure that diverse individuals fully participate in all aspects of organizational work, including decision-making processes. It also refers to the ways that diverse participants are valued as respected members of an organization and/or community.



**Accessibility** is giving equitable access to everyone along the continuum of human ability and experience. Accessibility encompasses the broader meanings of compliance and refers to how organizations make space for the characteristics that each person brings.

## Higher rates of MH issues and Trauma

Base rate of IDD, ASD, ASD with  
IDD, global disabilities....

- 8%?

Depression, Anxiety, Trauma

- Suicidality, sexual victimization

ADHD (same)

# Common Barriers to MH access among persons with IDD and/or ASD

- Competency and Comfort of Providers
- Network Adequacy (and Turf Wars?)
- Funding restrictions and fractured systems
- Diagnostic Differences
- Treatment Differences

# Competency and Comfort of Providers

---

## Competent service and MH ethics

- Lack of training programs
- Lack of mentors
- Licensing boards....
- EASY OUT for most!

## Where does comfort fit in?

- Some folks just don't feel "comfortable" serving our consumers...what if we replaced IDD with any ethnic, religious, sexual orientation or self identity group? Would it be ok then?
- Can't "make" a person comfortable....but exposure and real understanding go a long way

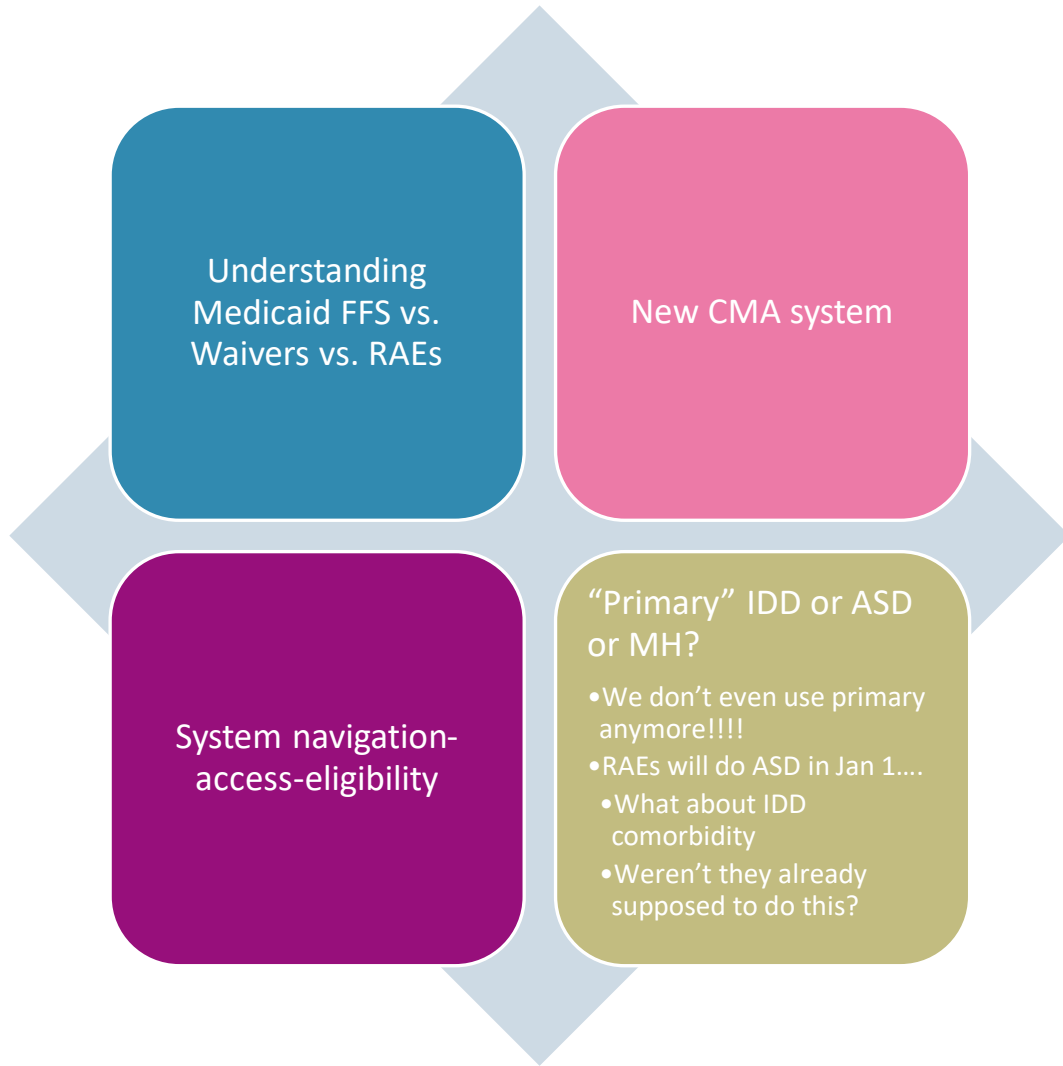


# Network Adequacy (and Turf Wars?)

---

- What is network adequacy?
- How does Mental Health Parity law come into play?
- Why are behavior supports NOT part of our mental health treatment options per Medicaid?
- Are there hidden Turf Wars?
  - And then we get to ‘not my job, it’s his job’

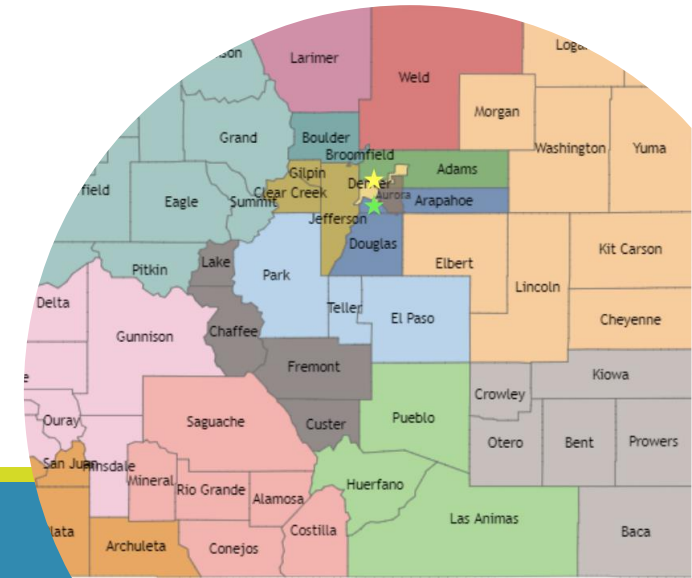
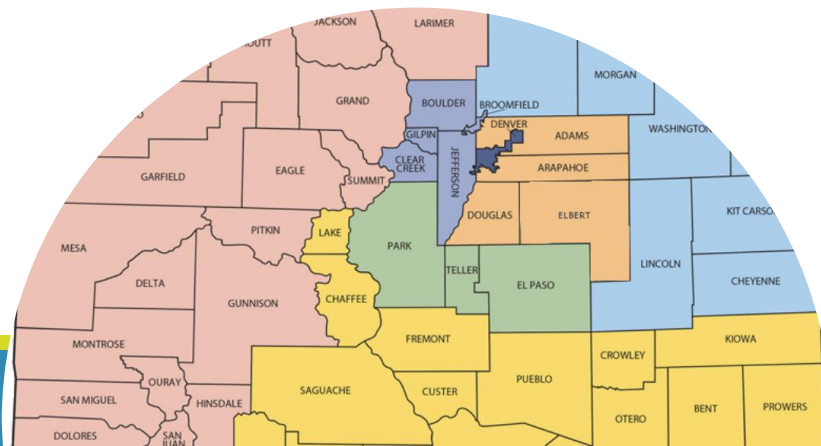
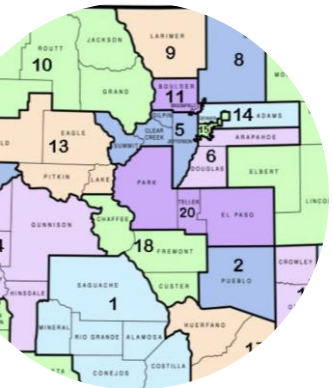
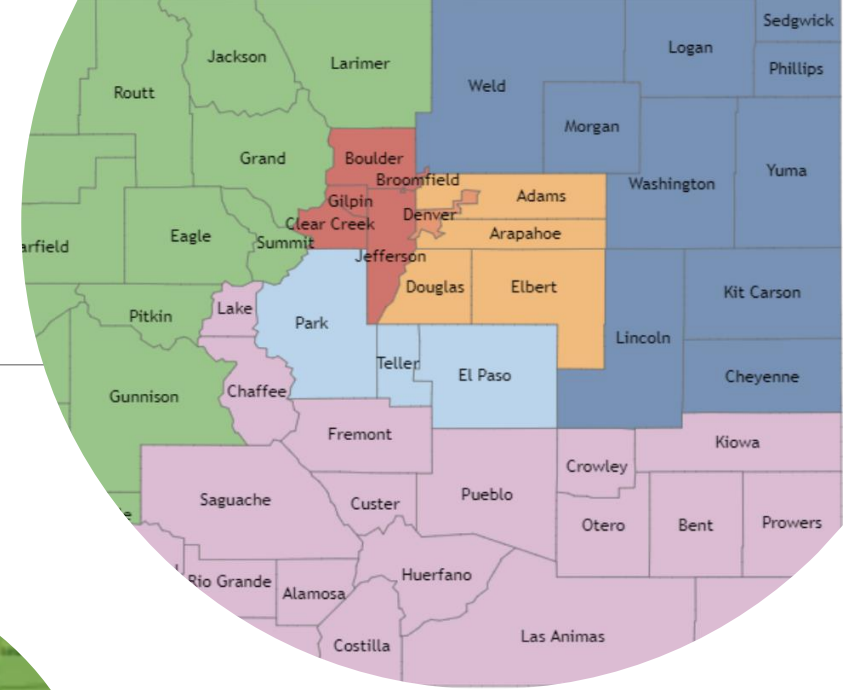




# Funding restrictions and fractured systems

*Colorado CCBs (19), RAEs (7), CMAs (20), ASOs (4), MSOs?, CMHCs?*

- <https://bha.colorado.gov/sites/bha/files/documents/BHAAC%20Special%20Session%20Slide%20Deck%2011-30-22.pdf>



Diagnostic Manual –  
Intellectual Disability:

A Textbook of Diagnosis of  
Mental Disorders in Persons  
with Intellectual Disability

DM-ID

2

Edited by

Robert J. Fletcher, DSW, ACSW, NADD-CC, Chief Editor

Jarrett Barnhill, MD, DLFAPA, FAACAP

Sally-Ann Cooper, MD, FRCPsych

NADD-ID

# Diagnostic Differences

- How is it the same? How is it different?
- Philosophical and theoretical challenges
  - OLD CT models and MDD

## EXAMPLE




Autism and Child Psychopathology Series  
Series Editor: Johnny L. Matson

Johnny L. Matson *Editor*

# Handbook of Intellectual Disabilities

Integrating Theory, Research, and Practice

 Springer

## Treatment Differences

- How is it the same? How is it different?
- Using much of what you already know
- Integrating Function into Symptom understanding

# Learning more....

- Resources
  - DM-ID-2
- Our Workshops



## Providing Mental Health Treatment to Persons with Intellectual and Developmental Disabilities (IDD)

Remote Learning Course

In many communities, disability, mental health, and education professionals lack key knowledge about people who have both IDD and mental health challenges. There is often a lack of appropriate resources or services available for families, and they often report that disability and mental health systems can be complex and inflexible.

People with dual diagnosis, parents, and siblings may feel lonely or isolated because of a lack of understanding, discrimination, or stigma. These issues can also create communication struggles between families and professionals.

Co-occurring disabilities, including mental illness in children and adolescents with IDD, are common and persistent across the lifespan. Unfortunately, **only 1 in 10** children and adolescents with co-occurring disabilities receive specialized mental health services.

To address these problems, Oliver Behavioral Consultants and Rocky Mountain Health Plans is offering a course focusing on intellectual developmental disabilities as it relates to co-occurring mental illness, anxiety, ADHD, depression, psychosis and trauma-informed diagnosis.

All courses are offered from **9:00am – 3:00pm MST**. Select from **one** of four course options:

- April 17, 2023 – April 21, 2023
- September 11, 2023 – September 15, 2023
- June 12, 2023 – June 16, 2023
- December 4, 2023 – December 8, 2023

[Register Here!](#)

★ Active Student Learning format

★ Post class examination

★ \$3,000 reimbursement for course completion for the first 50 provider registrants (must complete course in its entirety)

★ Certificate of completion for completing course and exams

★ Classes are remote

For additional information or questions email [raesupport@uhc.com](mailto:raesupport@uhc.com)  
or call ReNae Anderson at 970-393-0170





Wrap Up and Questions?



Peer networks, advocacy, RAE 1 projects, teaching, community events.



Speech, OT, ABA, MH and Diagnostics



720.459.7493



[info@oliver-bc.com](mailto:info@oliver-bc.com)

[www.oliverbehavior.com](http://www.oliverbehavior.com)

---

# About OBC